

# One Button Measuring Microscope

Technology Factory  
Rapid Quality Insurance



# Product features



**Easy to Handle**  
-with simple training can handle it

**Widely Testing Items**  
-Suit for all kinds of parts, hardware etc

**Fast Image Measuring**  
-Get a testing result in 1 second

**High Precision**  
-The precision is under 0.003mm

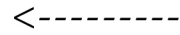
**Language Support**  
-support english version

**Multiple measuring**  
-can measuring 20-30pcs parts one time

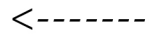
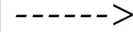


## One Button Measuring Microscope

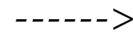
Model	XTH-30M	XTH-60M	XTH-80M	XTH-1715M
Camera parameters	1/2-2/3inch,2-10 million pixels(depending on product requirement)			
Optic lens	0.3times telecentric	0.17times telecentric	0.088times telecentric	0.088times telecentric
views	Longest edge 30mm	Longest edge 60mm	Longest edge 80mm	Longest edge 150mm
Accuracy	2um	3um	4um	6um
Product weigh	25kg	25kg	35kg	45kg
Lens multiplier	Single rate or double rate(custom according to your choice)			
Measuring time	1-2 seconds			
Result judge	OK or NG			
Software	Xintiho V1.2			
Computer	Intel CPU i5 4G memory			
Work environment	25degree ±2			



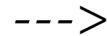
Camera



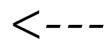
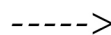
Telecentric lens



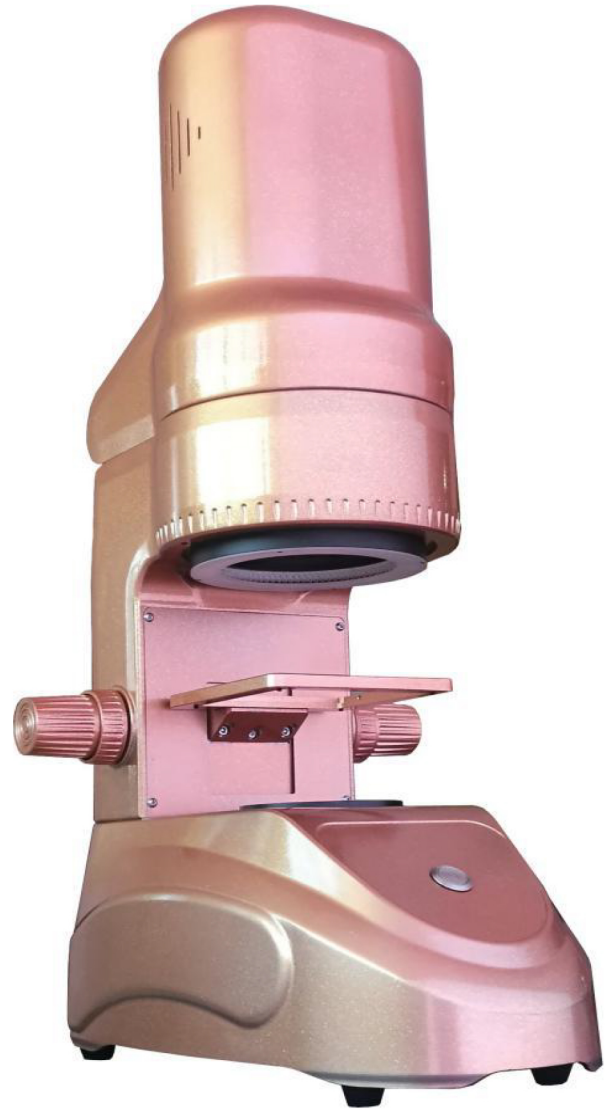
Reflect light



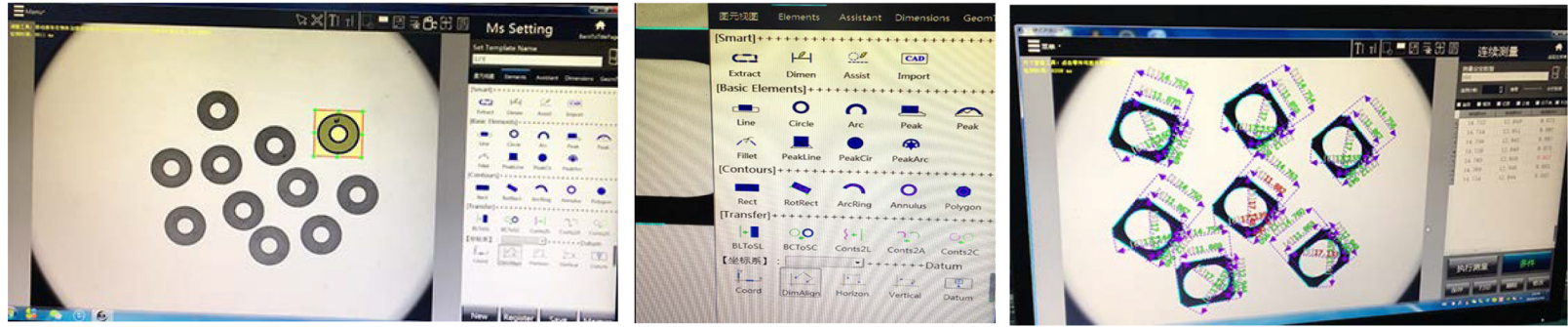
Focusing knob



Bottom light

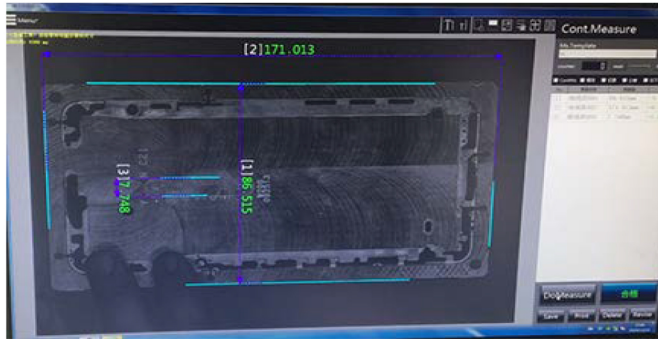


# FUNCTION INTRODUCTION

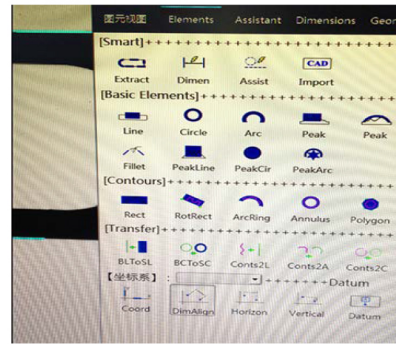


- ① It has the characteristics of simple operation, wide measuring range, high stability and high measurement accuracy.
- ② Image measurement of points, lines, circles, arcs, distances, ellipses, angles, etc. can be achieved.
- ③ For the corresponding basic primitives of the measurement, the measurement software automatically detects a series of edge contour points, and accurately fits the corresponding primitives with the company's self-developed improved least squares, so as to achieve the best measurement results.
- ④ There are a variety of ways to take a point to ensure a more accurate point in the measurement process.
- ⑤ Users can customize the coordinate system for measurements.
- ⑥ With intersecting, bisecting, vertical, parallel, and tangent functions, it is more capable of measuring the size required by customers.
- ⑦ Support multiple languages: Chinese Simplified, Chinese Traditional, English.

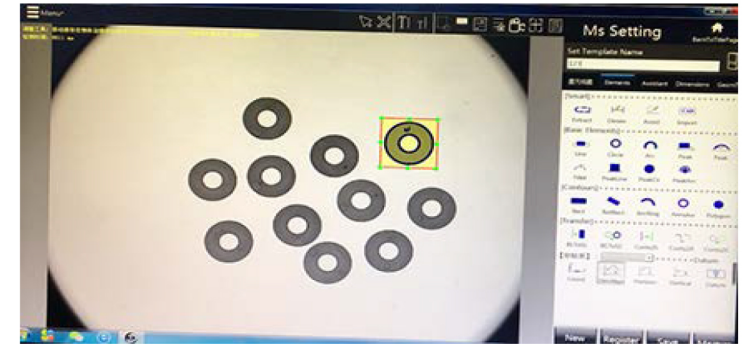
# APPLICATION CASE



Rapid surface measurement

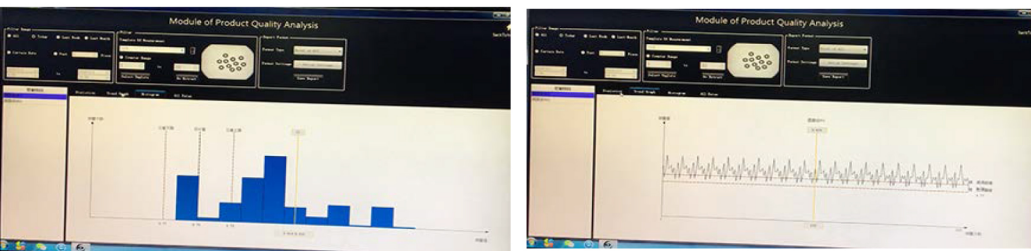


measurement function



Rapid contour measurement

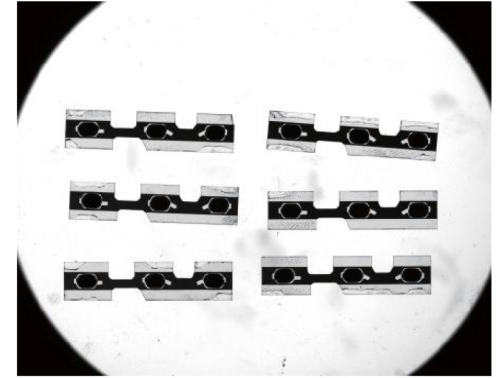
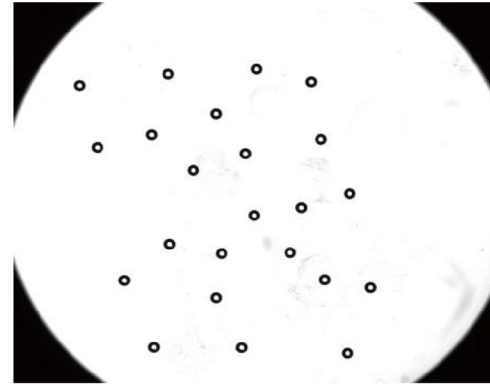
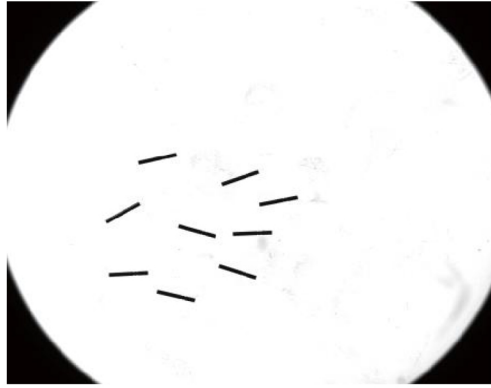
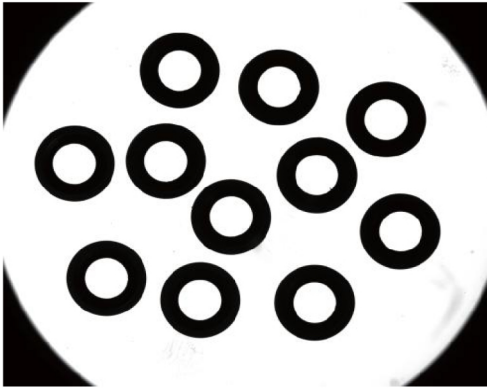
## Software Statistic & Report



Item	Value
1	171.013
2	197.515
3	2746
4	515

- The large field of view of the overall imaging , automatic measurement
- The workpiece can be placed freely without the need for fixture positioning.
- Multiple workpieces can be measured at the same time.
- Statistics data can be calculate and show.
- Easy to create Excel data report
- Improve the efficiency of operation and save cost.

## Machine imaging examples



## APPLICATION INDUSTRY



Machinery, electronics, molds, injection molding, hardware, rubber, low-voltage electrical appliances, magnetic materials, precision hardware, precision stamping, Connectors, connectors, terminals, mobile phones, home appliances, computers (computers), liquid crystal televisions (LCDs), printed circuit boards (circuit boards) , PCB), automotive, medical equipment, watches, knives, instruments, etc.

# DETAIL DISPLAY



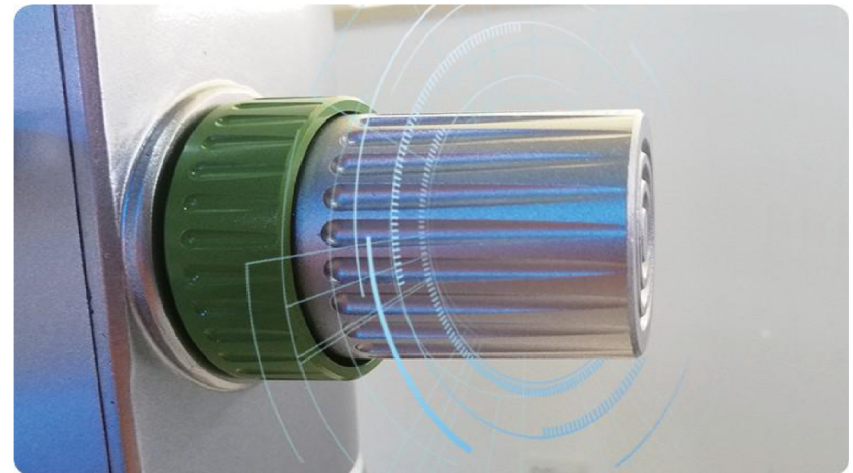
It can quickly complete multiple workpieces measurement jobs on the measurement bench at a time



Multi-angle controllable upper light source and high-definition lens



User freindly design button, with long term operation without pressure



combining the coarse adjustment and fine adjustment, the operation is eailer

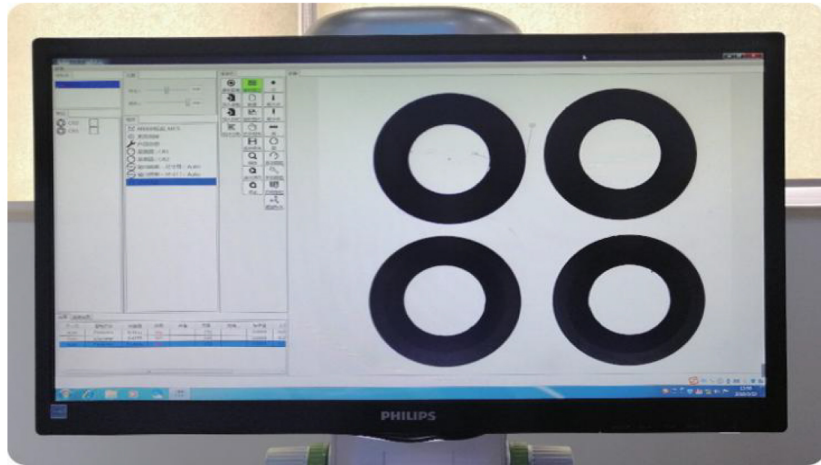




Desktop compact keyboard, user-friendly keyboard and mouse design



With a single press, the test result comes out in 1 second



Reasonable operation interface, large window, easy to view



Good product observation, bottom crystal clear parallel glass