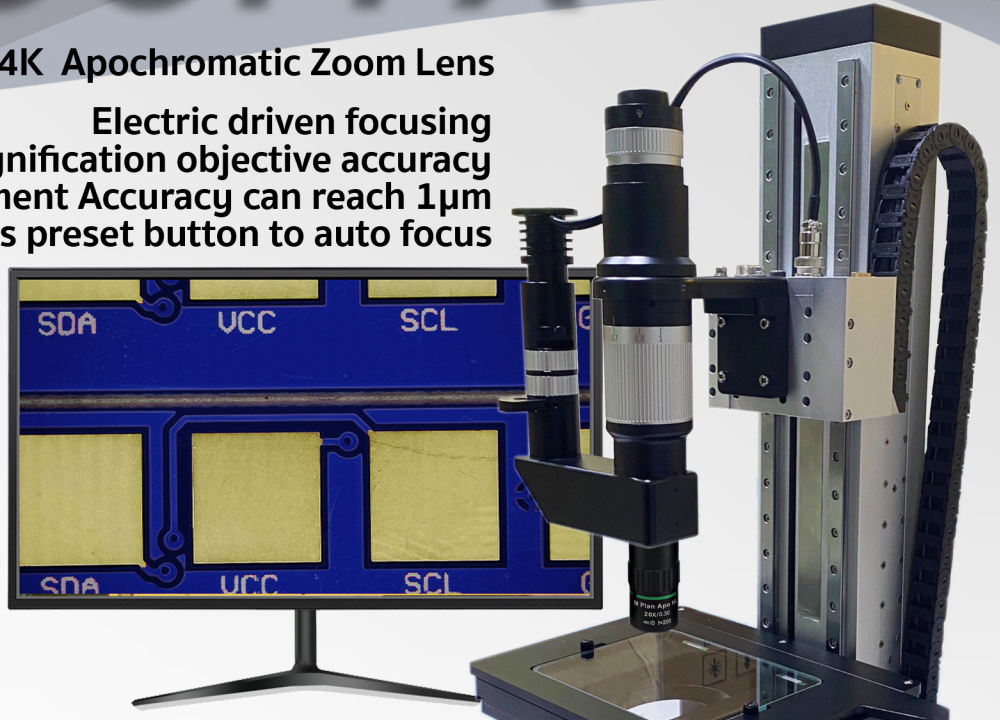


ZOOM X

4K
ULTRAHD

Ultra high Resolution 4K Apochromatic Zoom Lens

Electric driven focusing
High magnification objective accuracy
adjustment Accuracy can reach 1μm
Press preset button to auto focus



Better effect image with long working distance plan APO objective lens



ENG microscope

072.935 mm Make Zero

222 Pin Light
102 BackLight

Call-1 SET-1 170.101
Call-2 SET-2 170.101
Call-3 SET-3 167.142
Call-4 SET-4 371.901
Call-5 SET-5 170.101

X1 UP
X10 DOWN
X100

X,Y,Z

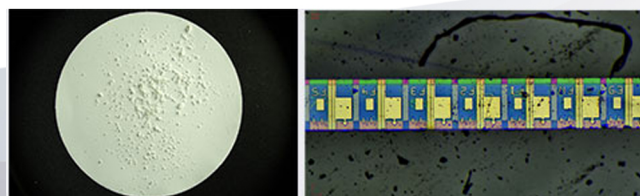
Apochromatic optical system. Ultra 4K image.1:10 zoom ratio.0.5-5.0X standard zoom body.

User can choose different magnification C mount and objective lens

Magnification	0.5X	1.0X	2.0X	3.0X	4.0X	5.0X
Focus distance(mm)	45	90	180	270	360	450
Working distance(mm)	100	100	100	100	100	100
Depth of field (mm)	3.48	0.93	0.29	0.16	0.10	0.07
NA(mm)	0.023	0.043	0.070	0.085	0.097	0.107
Resolution(mm)	0.015	0.008	0.005	0.004	0.003	0.003
F/#	10.9	11.6	14.3	17.6	20.6	23.4
Dist%	2.97%	1.10%	0.20%	-0.03%	0.13%	0.20%
CCD	1"	1"	1"	1"	1"	1"
Mount	C	C	C	C	C	C



CCD 4K



Main Feature

01 Apochromatic optical system. Ultra 4K image. Greatly improve the analysis and automated intelligent computing judgment.

02 0.5-5.0X zoom body Supports 1inch sensor camera. Improve FOV more 1.5X than the traditional zoom lens at the same magnification.

03 Modular design. It can be equipped with functional components such as coaxial lighting, APO objective and objective nosepiece etc.



04 Using the principle of apochromatic system, the image is perfectly clear without refocusing in different wavelength lighting situations. Widely used in food, silicon chips, chips, electronic components, biology and other fields of detection and research.

05 1:10 zoom ratio. 0.5-5.0X standard zoom body. User can choose different magnification C mount and objective lens. The expansible multipliers are shown below :

Better effect image with long working distance plan APO objective lens



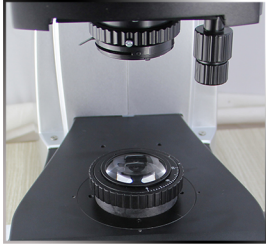
High Power 95mm long working distance plan APO objective

Model	Mag.	NA	WD	f"	Resolution	$\pm \Delta p(\mu m)$ Depth of field	WF10X24	Thread size
FWUF2X-95M	2X	0.06mm	34.mm	100mm	6.5um	110um	$\phi 12mm$	M26x1/36"
FWUF5X-95M	5X	0.15mm	44.9mm	40mm	2.5um	18um	$\phi 4.8mm$	M26x1/36"
FWUF10X-95M	10X	0.3mm	33.9mm	20mm	1.0um	3.5um	$\phi 2.4mm$	M26x1/36"
FWUF20X-95M	20X	0.3mm	30.9mm	10mm	1.0um	3.5um	$\phi 1.2mm$	M26x1/36"
FWUF20X-95M45	20X	0.45mm	20.1mm	10mm	0.7um	1.6um	$\phi 1.2mm$	M26x1/36"
FWUF50X-95M	50X	0.45mm	20.1mm	4mm	0.7um	1.6um	$\phi 0.45mm$	M26x1/36"
FWUF50X-95M65	50X	0.65mm	9.4mm	4mm	0.4um	0.55um	$\phi 0.48mm$	M26x1/36"
FWUF100X-95M	100X	0.8mm	6mm	2mm	0.4um	0.6um	$\phi 0.24mm$	M26x1/36"

Electric driven focusing
High magnification objective accuracy
adjustment Accuracy can reach 1µm
Press preset button to auto focus



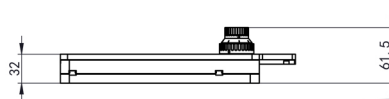
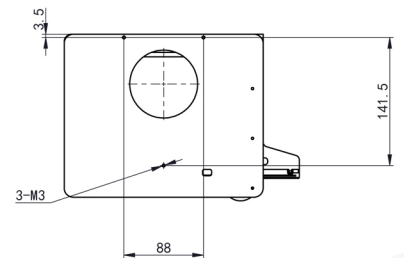
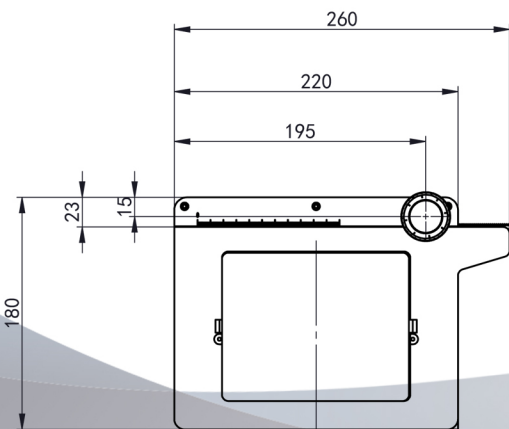
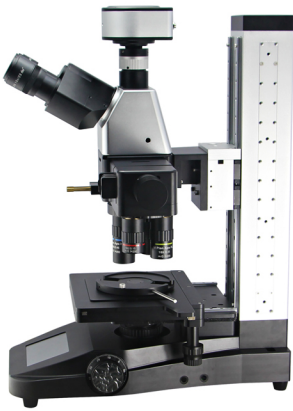
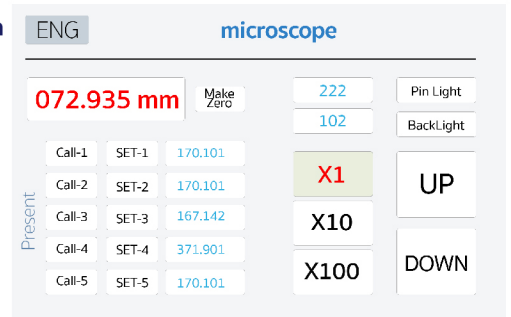
01 Electric driven focusing,
 High magnification
 objective accuracy
 adjustment Accuracy
 can reach 1µm
 Press preset button
 to auto focus



02 Transmitted illumination
 system: Abbe condenser
 N.A:1.25
 Kohler illumination
 Integrated field
 diaphragm and halogen
 lamp adding radiator
 and brightness control



Touch Control Screen



- Requirement**
1. Stroke X110mm Y105mm.
 2. There are two options: Z-axis rotating block and glass plate transparent plate.
 3. Glass plate size: 145mm*115mm.
 4. Effective bearing size of Z-axis rotary table: 4 inches, 2 inches



@vskconsummate

